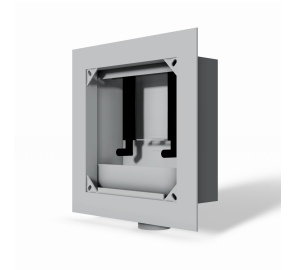




# REVIT CONTENT GUIDE

**Manufacturer:** IPS Corporation  
**File:** Outlet\_Box-Dual\_Valve\_Dialysis-IPS\_Corporation.rfa  
**Type Catalog:** Not Applicable  
**Rendering file:** Not Applicable  
**Schedule file:** Schedule - Outlet\_Box-Dual\_Valve\_Dialysis-IPS\_Corporation.rvt



## Instance Properties

| Construction               |                                     |
|----------------------------|-------------------------------------|
| Drywall Thickness Actual*  | 0.500                               |
| Drywall Thickness Desired* | 0.500                               |
| Graphics                   |                                     |
| Door is Open               | <input checked="" type="checkbox"/> |
| Identity Data              |                                     |
| Part Number*               | SSDB2                               |

## Type Properties

The family contains the following 2 types:  
 No Door (Values for this type are shown below)  
 Standard

| Adsk Model Properties |               |
|-----------------------|---------------|
| Product Code          | 82645         |
| UPC*                  | 012181-826461 |
| Constraints           |               |
| Default Elevation     | 48.000        |
| Dimension             |               |
| Depth*                | 3.565         |
| Height*               | 11.240        |
| Width*                | 11.240        |

| <b>Identity Data</b>        |   |
|-----------------------------|---|
| Copyright*                  | Copyright © IPS Corporation   |
| Date Last Modified*         | November 19, 2013   |
| Description                 | Dialysis Box with Two Valves  |
| Equipment Abbreviation*     | DBO   |
| Equipment Number*           |   |
| Family Version*             | 1.0.0   |
| Manufacturer                | IPS Corporation   |
| Model                       | SSDB2   |
| Model Disclaimer*           | For more information contact IPS Corporation  |
| Original Creation Date*     | November 19, 2013   |
| Part Description*           | Dialysis Box with Two Valves  |
| Product Documentation Link* | <a href="http://ipscorp.com/pdf/guygray/SpecDialysisBox.pdf">http://ipscorp.com/pdf/guygray/SpecDialysisBox.pdf</a>           |
| Product Page URL*           | <a href="http://ipscorp.com/pdf/guygray/SellSheetDialysisBox.pdf">http://ipscorp.com/pdf/guygray/SellSheetDialysisBox.pdf</a> |
| Provide Feedback*           | <a href="https://www.surveymonkey.com/s/HMHGCSG">https://www.surveymonkey.com/s/HMHGCSG</a>                                   |
| URL                         | <a href="http://www.ipscorp.com">http://www.ipscorp.com</a>   |
| <b>Materials</b>            |   |
| Product Material*           | Steel - IPS - Galvanized  |
| <b>Mechanical</b>           |   |
| GPM*                        | 0 GPM   |
| <b>Structural</b>           |   |
| Weight*                     | 3.20 lb   |

Half-tone text in the property tables indicates that the value is locked from editing.

\*Indicates Shared Parameter and can be scheduled

## Loading and Placing into the Project

One “Plumbing Fixture” family is supplied and may be loaded into Revit through all traditional methods. Using the visibility settings of the view that is intended for placement ensure that the Plumbing Fixture category is visible.

The Dialysis Box is a “Face Based” model and must have a surface to be placed in the project. IPS Corp. families have been designed for ease of use with generic walls supplied within Revit. To use this functionality, ensure that Dialysis Box is placed onto an existing wall. Select “Modify” from the ribbon types and click the “Cut” option. Finally, select the wall the Dialysis Box is placed on and then the Dialysis Box itself.

Note: When the user cuts the wall for the Dialysis Box, a warning dialog will appear; this warning is simply stating that the unit WILL NOT stay connected to the wall if it is moved within the project environment.

## Project Behavior

Within the type and instance properties dialogues the user will find useful information for scheduling purposes such as Height, Width, Depth, Weight, and other unique properties to the Dialysis Box. In the “Identity Data” parameter category the user will find information specific to IPS Corp. and the model such as copyright information, part description, part number, product page URL, and other information to further define the family.

The Dialysis Box is set to change with detail levels in the project it is placed in. The internal features represented on the product will change from a simple representation in Coarse or Medium to a more defined shape in Fine detail level. There is no change between Coarse and Medium detail levels.

## Instance Parameter

In the “Instance Parameters” of the model the user has the following options to modify:

Drywall Thickness– The user determines the gap between the box and faceplate. The parameter is limited to show between ½” to 1 ¼” gap even though the user can input any number.

Door is Open- This is checked upon placement and allows the user to open or close the door.

Drain Flow - The user can input the drain flow once calculations are done for the family.

Elevation - Determines the initial insertion height of the Dialysis Box, this parameter can be modified by the user.

The Dialysis Box's Part Number and Part Description will be visible in the Properties Dialogue when the product is selected for easy referencing.

## Type Parameter

Because the Dialysis Box represents a manufactured product the type parameters within the family should not be modified for Standard configuration. Please note:

Product Page URL - Directs to the manufacturer's online listing of the product

Product Documentation Link - Directs to the product's online specification sheet

Equipment Abbreviation - This parameter exists for filtering schedules. \* See scheduling description below

Family Version - Lists the current revision number of the family

## Visibility

For best performance within a project all model geometry is turned off in Plan View when placed in the product's intended orientation. It is then represented by a masking region that will be visible on the product it is placed in. For ease of use all geometry is assigned to the category Plumbing Fixtures.

## Rendering

When the family is loaded into a project standard IPS Corp. materials are imported. The materials may be modified, though ensure that the modified selection matches an actual manufacturer supplied option.

## Schedule Creation

IPS Corp. products may be scheduled utilizing the schedule view in the provided project file. Select and copy (Ctrl+C) the schedule from the sheet view and paste it (Ctrl+V) into a sheet in your project. The schedule filters are set to look for only families with Manufacturer as "IPS Corp." and Equipment Abbreviation as "DBO".