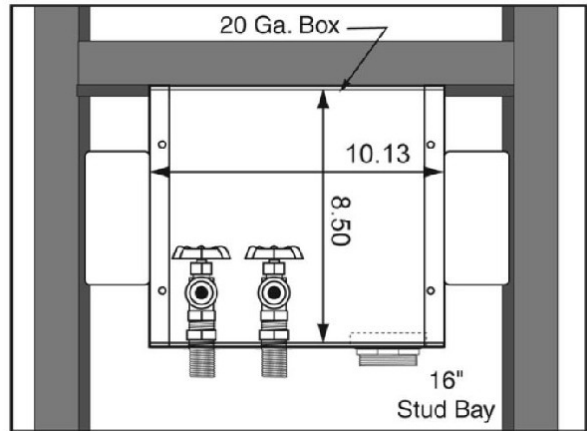
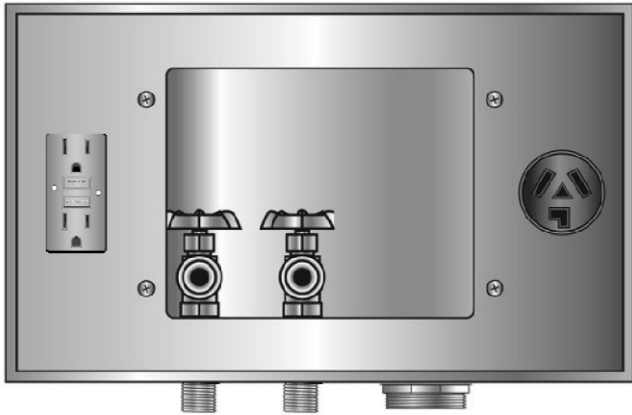


SPECIFICATION SUBMITTAL SHEET



**RIGHT DRAIN GALVANIZED WMOB, Domestic Valves
With GFCI & Dryer Receptacles**



Specification:

Furnish and install right drain galvanized washing machine outlet box with GFCI and dryer receptacles. Unit shall be Guy Gray product code as manufactured by IPS Corporation.

Box Material:

20 gauge Box and 20 gauge faceplate
G90 Hot Dipped Galvanized Steel (unpainted)

Valve & Drain Options:

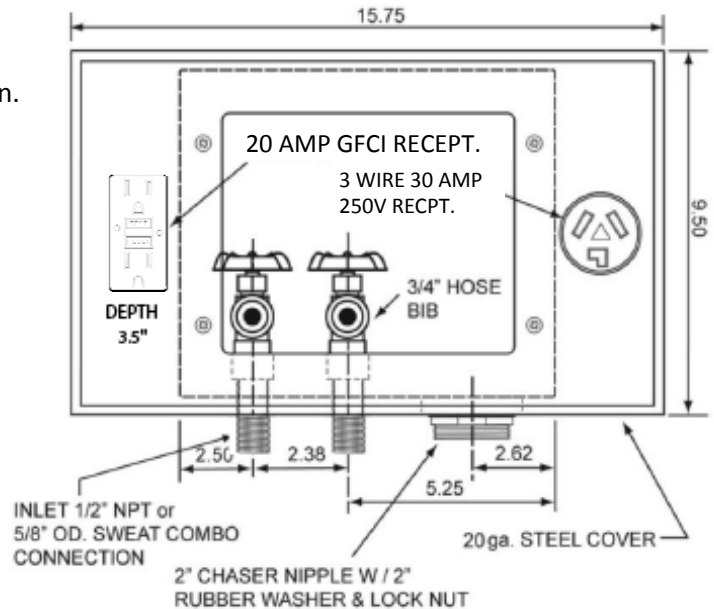
Domestic 1/2" MIP/Sweat Connection Valve.
2" Threaded Drain. Valves comply with ASME A112.18.1

Ground Fault Circuit Interrupter (GFCI)

Receptacles:

UL/CSA Listed
Rated: 20A outlet, 20A Feed-Through, 125V

3 Wire Dryer Receptacle: 30A/125/250V



Product Code #	Product Description	Model Number	Units/Case
82639	1/2" MIP/Sweat Conx. Valves, 2" Threaded Drain Fitting, w/GFCI and 3 Wire Dryer Recpt.	FBED200GF	6

