



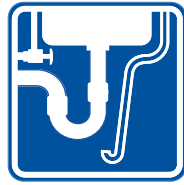
Clean design
and durable
protection for
ADA-compliant
sinks and
lavatories
installed into
countertops



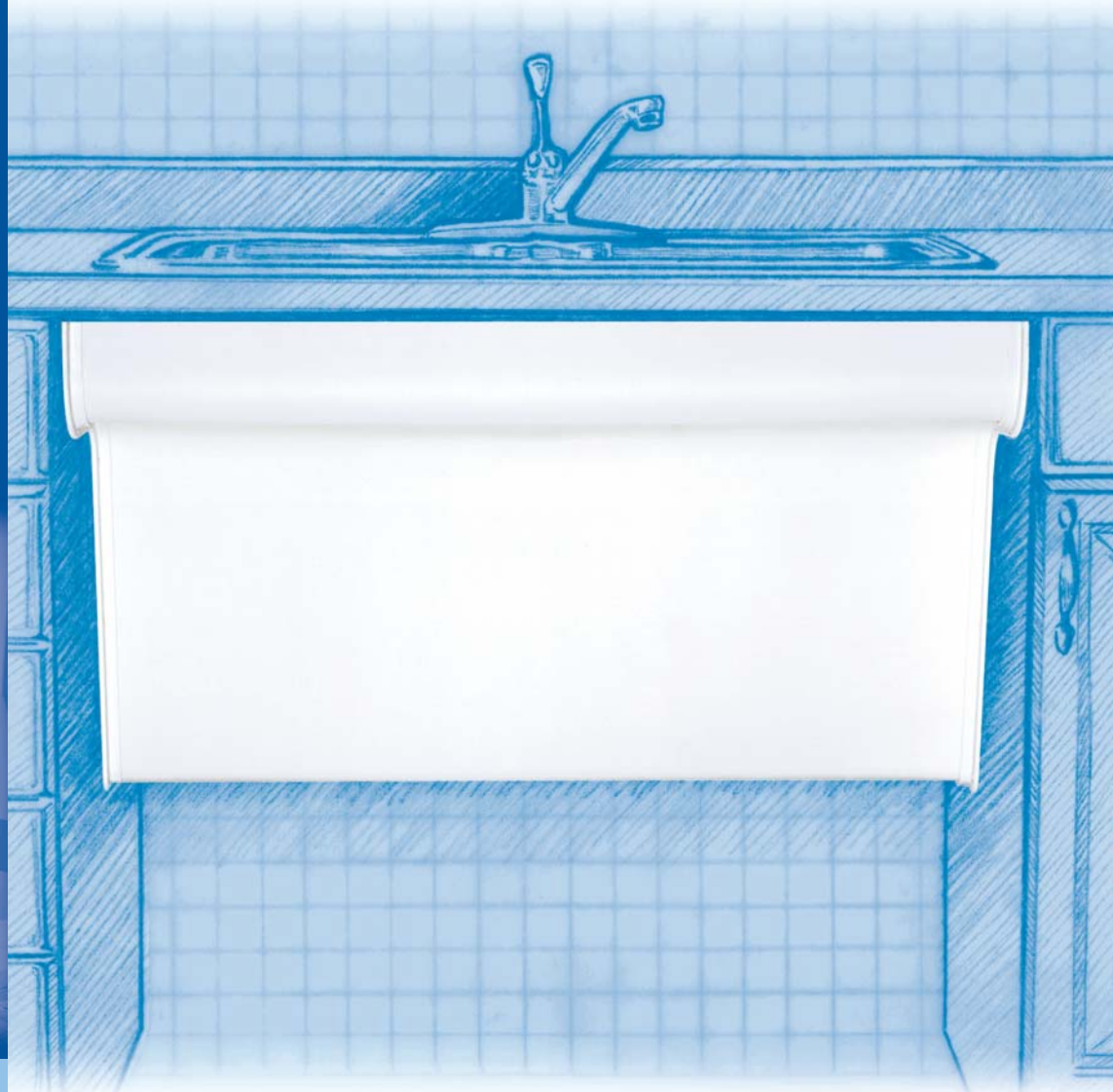
Interior designers appreciate
the versatility of BASIN GUARD
for easy application in homes,
schools, commercial businesses,
hotels, and more.

Since 1990, we at TRUEBRO, INC.
have concentrated our efforts on
"Making America Accessible"
by creating products that address
ADA-mandated undersink
wheelchair accessibility.

Specifying TRUEBRO is your
assurance of protecting people
with disabilities while providing
quality, durability, and improved
aesthetics.



BASIN GUARD[®]
UNDERSINK PROTECTIVE ENCLOSURES



BASIN GUARD[®] is the latest design in undersink protection
from TRUEBRO. This smooth, attractive enclosure conceals
unsightly piping and mechanical components, and still
maintains ADA mandated knee and foot clearance.
BASIN GUARD can be installed under kitchen, classroom,
and lavatory sinks where counter tops and sidewalls are
present. Bottom opening allows for easy service access.

TRUEBRO[®]
MAKING AMERICA ACCESSIBLE

IPS CORPORATION

An **IPS** Brand



Features and Benefits:

ADA-conforming design protects wheelchair users from scalding and sharp, abrasive surfaces.

When installed, all plumbing and mechanical components are concealed.

36" and 42" enclosures are easy to specify, stock and install.

The BASIN GUARD may be used with virtually any ADA-compliant sink or restroom lavatory where countertops and sidewalls are present. Such sinks are commonly specified in H.U.D. housing, elderly housing, condominiums, hotels, motels, and schools with in-classroom sinks.

High-impact, UV-protected vinyl maximizes product life cycle.

The BASIN GUARD is molded from impact-resistant, stain-resistant, and chemical-resistant protective vinyl for durability, safety, and long life.

"Front shield" design protects undersink components from tampering.

Durable, heavy-duty enclosure conceals all continuous-waste piping, electronic faucet components, dishwasher connections, garbage disposals, mixing valves, trap primers, and instantaneous water heaters.

Strict code compliance minimizes risk.

The BASIN GUARD complies with ADA article 4.19.4, California Plumbing Code 1504.2.1, ANSI A117.1, BOCA P 1203.4, and other state and local regulations. BASIN GUARD also has a flammability resistance, tested in accordance with Underwriters Laboratories for the UL 94 standard with a V-0 rating.



Available in white or beige (as shown above).

Suggested Specification:

ADA-compliant wheelchair accessible lavatories with countertops and sidewalls shall be equipped with the molded TRUEBRO, INC. BASIN GUARD undersink protective enclosure (Model #36 for 36" wide or #42 for 42" wide), Color: beige or white.

Specifications:

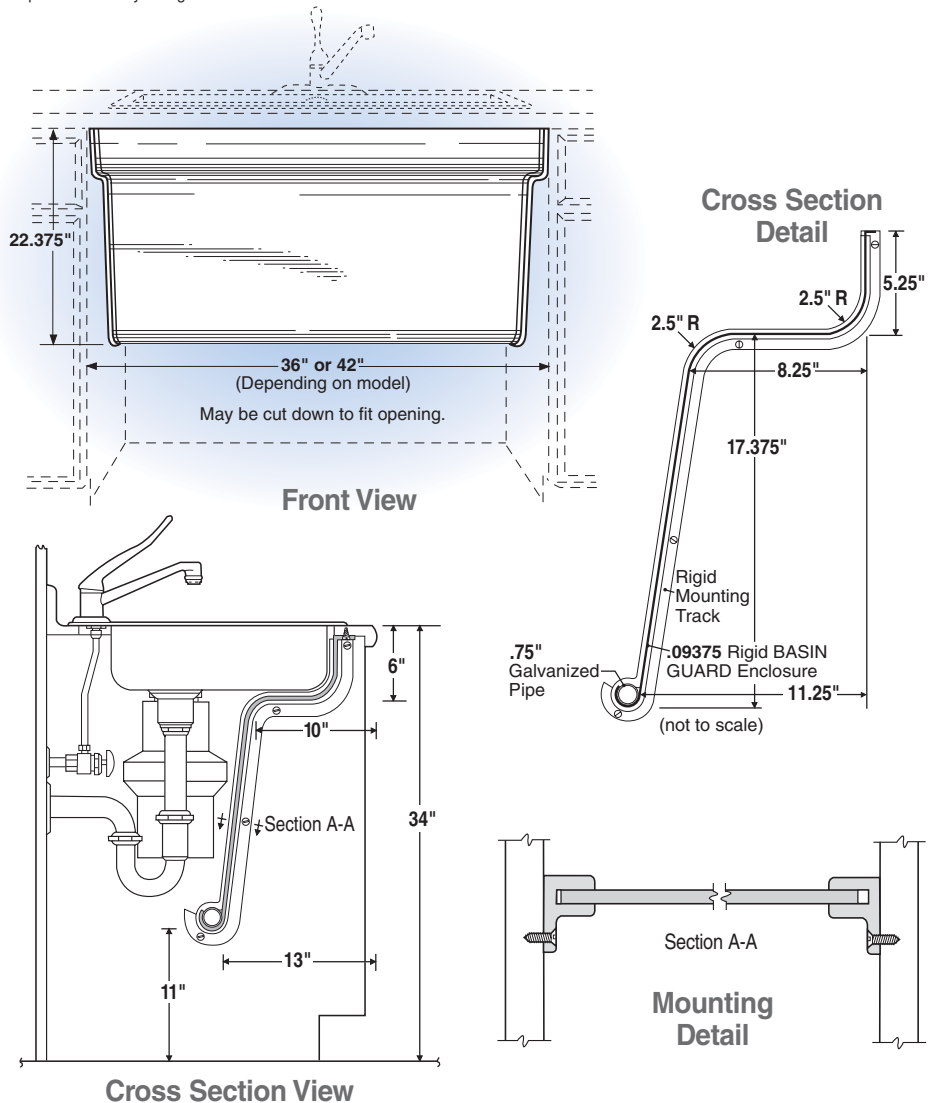
Material	Rigid high-impact, stain-resistant PVC
Nominal Wall	.093" constant
Finish	Fine haircell
UV Protection	Will not fade or discolor
Durability	Virtually indestructible
Fasteners	Eight (8) – #6 X 1/2" screws
Color	White or beige
Paintability	Apply acrylic enamel or latex paint
Flammability	UL-94 V-0, 5VB

The BASIN GUARD must be specified in combination with ADA-conforming sinks (example, Elkay GEGR or LRAD Line, or Just Manufacturing ADA Line with rear drain) with a maximum 6" deep bowl and rear waste outlet. Two sizes are available: Model #36 for maximum cabinet opening of 36" and Model #42 for a maximum cabinet opening of 42". BASIN GUARD may be trimmed smaller to fit actual opening size.

Models:

#36	36" wide – available in white or beige
#42	42" wide – available in white or beige

Specifications may change without notice.



IPS Corporation, 202 Industrial Park Lane, Collierville, TN 38017
 (901) 853-5001 (800) 340-5969 FAX: (901) 853-5008
 e-mail: info@truebro.com Internet: http://www.truebro.com

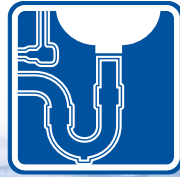


BASIN GUARD CLASSIFIED
 BY UNDERWRITERS
 LABORATORIES, INC.®
 IN ACCORDANCE WITH
 ADA article 4.19.4 22FF

**U.S. and
 Canadian Patents:**
 77,065, D375,154



**NEW, Improved,
fast-installing
antimicrobial
molded undersink
safety covers for
ADA accessibility
compliance**



LAV GUARD^{®2}

FAST FIT UNDERSINK PIPING COVERS

**All New
E-Z Series**



**NEW
E-Z Grip,
built-in
fasteners
are quick,
strong, and
reusable**

New LAV GUARD^{®2} E-Z series provides the durable, attractive protection LAV GUARD[®] is famous for. Now, built-in *E-Z Grip* fasteners and internal *E-Z Tear-To-Fit* trimming feature eliminate the need for tools, and provide for a clean, tamper-resistant, **super-fast** professional installation.

Since 1990, we at TRUEBRO, INC. have concentrated our efforts on "Making America Accessible" by creating products that address ADA-mandated undersink wheelchair accessibility.

Specifying TRUEBRO is your assurance of protecting people with disabilities while providing quality, durability, and improved aesthetics.





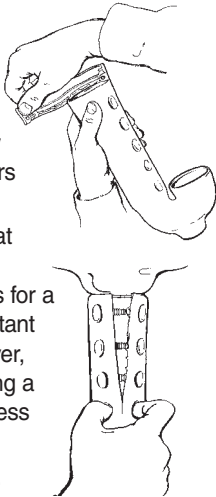
Features and Benefits:

New, improved E-Z series makes installation super-fast

- New *E-Z Tear-To-Fit* feature makes trimming super-fast and contractor-friendly—no tools required.
- New *E-Z Grip* built-in fasteners are quick, strong, and reusable.
- New universal design fits more P-traps and thumb wings on plastic compression nuts.

LAV GUARD 2 E-Z series installs in just 2 easy steps:

1. *Tear-To-Fit* on internal, dimensioned tear lines for quick, clean, accurate trimming to fit virtually any piping configuration. Covers flex to install over pipes.
2. Press seams together at finger recesses to engage *E-Z Grip* internal fasteners for a secure, safe, tamper-resistant installation. To remove cover, firmly pull seam apart using a strong grip. To reinstall, press seams back together.



Strict code compliance minimizes risk.

LAV GUARD 2 complies with: ADA article 4.19.4, CABO/ANSI 4.20.4, UFAS 4.19.4, California Title 24, UPC, IPC, ICC, Canada Barrier-Free Code.

Suggested Specification:

ADA-conforming, wheelchair accessible lavatory P-trap and angle valve assemblies shall be covered with white, molded, antimicrobial TRUEBRO, INC. LAV GUARD 2 undersink pipe covers. Cover shall have internal, *E-Z Tear-To-Fit* trim feature for square, clean trimming—internal ribs—and built-in, concealed *E-Z Grip* fasteners (no cable-tie fasteners allowed).

Model _____
Accessory _____



Manufactured under one or more of the following U.S. or Canadian patents. Other patents pending.

IPS Corporation
202 Industrial Park Lane
Collierville, TN 38017

(901) 853-5001 (800) 340-5969
FAX: (901) 853-5008

e-mail: info@truebro.com
Internet: http://www.truebro.com

5,303,730 5,360,031
5,524,669 5,564,463
5,678,598 5,699,828
5,915,412 5,915,413
5,901,739 5,960,820
2,075,324 2,119,427
2,136,027 2,158,083

Specifications:

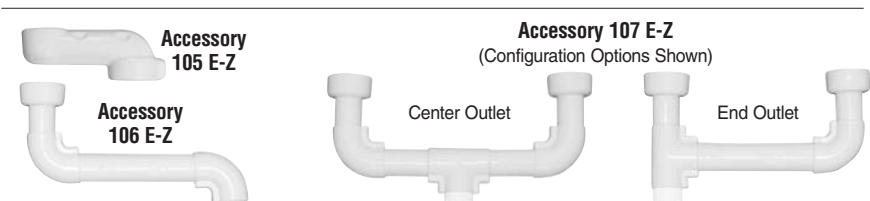
Material	Soft, resilient molded vinyl
Nominal Wall	1/8" constant with internal ribs
Durometer	70-80 — Shore A
UV Protection	Will not fade or discolor
Durability	Virtually indestructible
Trimming (E-Z Series)	Internal <i>E-Z Tear-To-Fit</i> trim feature
Fasteners (E-Z Series)	Internal <i>E-Z Grip</i> fasteners, reusable
Color	China white
Compatibility #100 E-Z Series	Fits all 1-1/4" or 1-1/2" cast brass or tubular P-trap assemblies and 3/8" or 1/2" angle stop assemblies
Compatibility #400* Series	Fits all 1-1/2" schedule 40 plastic P-traps
Paintability	Apply latex paint
Burning Characteristics ASTM D-635	Self extinguished 0 sec (ATB) mm (AEB)
Bacteria/Fungus Resistance	ASTM G21 and G22 — Result: 0 growth
Maintenance	Wipe clean using common detergents

Models Available

- #100 E-Z series for tubular P-traps
- #400W* series for schedule 40 plastic P-traps

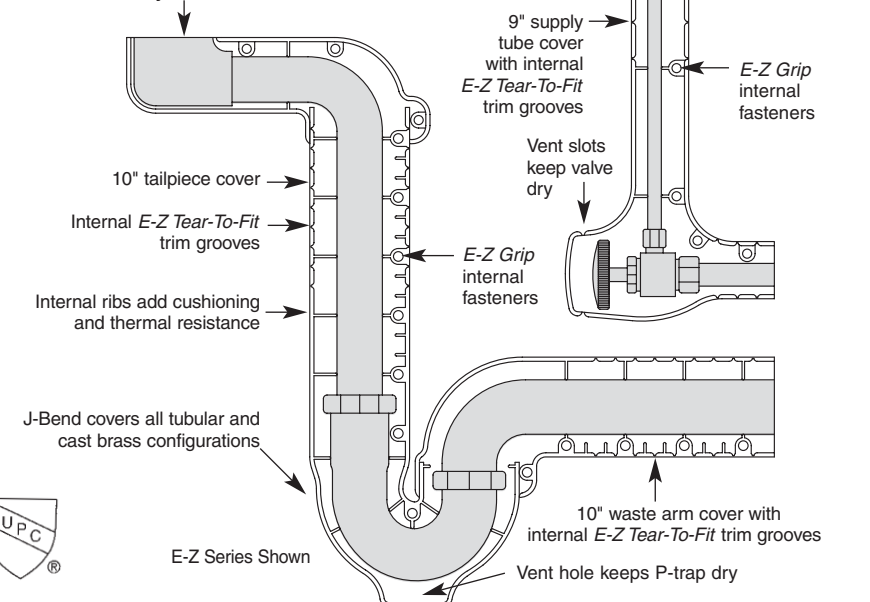
#99 E-Z	one angle valve and supply cover
#100 E-Z & #400W*	one P-trap cover
#101 E-Z & #401W*	one P-trap cover, one angle valve and supply cover
#102 E-Z & #402W*	one P-trap cover, two angle valves and supply covers
#103 E-Z	one P-trap cover, two angle valves and supply covers, one 5" offset tailpiece wheelchair strainer cover
Accessories:	
#105 E-Z	one 5" offset tailpiece wheelchair strainer assembly
#105-K	Kohler 6" offset
#106 E-Z	one basket strainer cover and offset waste cover (adjustable to 18")
#107 E-Z	two basket strainer covers and center or end outlet waste cover (adjustable)
Extensions:	
#EX99 E-Z	one 16" extension for water supply
#EX100 E-Z	one 16" extension for drain waste arm or tailpiece

*All #400 series items are the "original" LAV GUARD® design and construction. Specifications may change without notice.



Shown with **Accessory #105 E-Z** (fits all standard 5" offset wheelchair strainers). Accessories 105 E-Z, 106 E-Z, and 107 E-Z can be purchased separately.

NOTE: Accessory #105 E-Z is included in #103 E-Z kits.





Soft ADA-Compliant Under Sink Covers

Protect Wheelchair Users From Possible Burns and Abrasions

- Durable Fusion-Welded Seams
- 1/8" Pliable PVC Shell Finish Compliments Fixtures
- Anti-Microbial, UV-Inhibited, and Anti-Fungal
- P-trap and Valve Covers Fit Schedule 40 Traps and Flexible Braided Supplies
- Disposal Cover Fits Badger Models 1 and 5



25 Flame/450 Smoke Index*

Fast-Install Hook and Loop Fastening

Cut-to-fit design eliminates additional extension parts and tape!

*Base material tested in accordance with Testing Standard ASTM E 84-07 with a 25 flame spread/450 smoke index (not for Plenum use).



SOFT GUARD PLUS™ | Soft ADA-Compliant Under Sink Cover



- Complies with Americans with Disabilities Act (ADA)*
- PVC Base Insulation Material Complies with 25 Flame Spread/450 Smoke Index**

DESCRIPTION	ITEM NO./COLOR	CASE/QTY	UPC
25/450 Soft-Guard Plus Water Valve Cover	82521 / White	10	012181825211
	82492 / Black	10	012181824924
25/450 Soft-Guard Plus P-Trap Cover	82522 / White	10	012181825228
	82493 / Black	10	012181824931
25/450 Soft-Guard Plus Offset Cover	82523 / White	10	012181825235
	82494 / Black	10	012181824948
25/450 Soft-Guard Plus P-Trap & One Valve Cover	82524 / White	10	012181825242
	82495 / Black	10	012181824955
25/450 Soft-Guard Plus P-Trap & Two Valve Covers	82525 / White	10	012181825259
	82496 / Black	10	012181824962
Soft-Guard Plus Disposal Cover	82528 / White	4	012181825280

* ADA 4.19.4, ICC/ANSI A117.1 (sec. 606.6). Protects wheelchair users from cuts, burns and abrasions.

** Base material tested in accordance with Testing Standard ASTM E 84-07 with a 25 flame spread/450 smoke index (not for Plenum use).

COMPATIBLE SIZES

P-TRAPS SIZES:

- 1-¼" Tubular/Cast Brass
- 1-½" Tubular/Cast Brass
- 1-½" Tubular Plastic with WingNuts
- 1-½" Schedule 40 Plastic with Swivel Nuts

DISPOSAL SIZES

- Badger Model 1
- Badger Model 5

SPECIFICATION

Insulate disposal under kitchen sink and all drainage piping including hot and cold water valve and supplies under lavatories to meet ADA (Americans with Disabilities Act) and UPC (International Building Code).

ACCESSIBILITY REQUIREMENTS

ADA 4.19.4, (ADA/ABA 606.5 rev.) and ICC/ANSI A117.1, (sec.606.6).

INSTALLATION INSTRUCTIONS

STEP 1: Measure and trim Soft-Guard PLUS with scissors to size needed

STEP 2: Place appropriate Soft-Guard PLUS cover over P-trap or Valve and Supply or Kitchen Disposal

STEP 3: Secure in position by joining internal Hook and Loop fastening system

STEP 4: For improved tamper resistance and tighter custom fit, insert snap-to-lock fasteners through pre-drilled holes and press together to lock